

**Winlead
Dialer
SoftwareTM
Users Manual
Addendum 3
Installing Winlead
Dialer Software on the
Windows 2000[®]
System**

Copyright © 2002 by Winlead Dialer Software

1.0 - Install Guide for Winlead Dialer Software™ Software and Windows 2000 Professional®.

YOU MUST COMPLETE YOUR INSTALL IN THE FOLLOWING ORDER:

1. Verify your system meets minimum requirements for Windows 2000 Professional.
2. Install Dialogic® software.
3. Install Dialogic Board(s).
4. Install CoolEdit® software.
5. Install Winlead Dialer Software.
6. Configure Winlead Dialer Software

1.1 – Windows 2000 Professional system requirements

The following is our only approved **WINDOWS 2000 PROFESSIONAL** software configuration:

Windows 2000 Professional 5.00.xxxx
Service Pack 2 applied
Microsoft Explorer 4.01 Service Pack 1
Dial-up networking/RAS services installed

Installing on a system that does not match these requirements can result in your software not performing correctly. Winlead Dialer Software only supports this configuration.

2.0 - Dialogic Software Installation

Run the Setup. exe file found in the Dialogic 5.1.x folder inside the folder on your Dialogic CD-ROM. Follow the sequence of actions as follows.

2.1 - The Initial Setup Window

After double clicking the setup.exe file the ‘Welcome to Setup’ window will open. Click on the ‘Next’ button. Would you like to view the release guide? Click yes to view or no to proceed.

2.1a - License Agreement

Click yes.

2.2 - Name and Company Window

The Name and Company window will appear. Fill in the appropriate ‘Name’ and ‘Company’ and click next.

2.3 - Selecting the ‘CUSTOM’ Install Method

Click on the button next to ‘CUSTOM’ to start the install.

Click NEXT all the way through.

2.4 - The ‘Destination Location’ Window will Open

It is recommended you go with the default install location. If you want to change the location click on the ‘Browse’ button. With your location selected click the ‘Next’ button.

2.5 – Program Group Folder

Click Next

2.6 – Setup Options Summary

Click Next

2.9 – Setup Complete

Click on the “OK” button in the “Setup Complete” dialog box that opens on your screen.

2.10 – The “DCM” Window

The Dialogic Configuration Manager – DCM window should be open on your screen. Click on the “Add Device” button. Or go to the “Action” pull down menu to “Add Device”. The “DCM” Add Hardware Wizard will open.

The “properties” window for the board that you just added will open on your screen. It will show you the IRQ and Memory range assigned to this board. Click on the “OK” button.

NOTE: In the event you need to change these settings this is the window you would change them in.

2.11 - RESTART COMPUTER

2.14 – Adding additional boards

For each board you need to add repeat steps 3.0 to 4.6

3.0 - Installing the Dialogic Board(s)

Read this entire section before proceeding with the install.

Install Dialogic board(s) computer. For multiple boards install them in the order of the offset address.

3.1 - Proper Precautions When Installing Dialogic Board(s)

Install the Dialogic Board(s) in a static-safe work area.



Figure 3.1.32

3.2 - Board Configuration

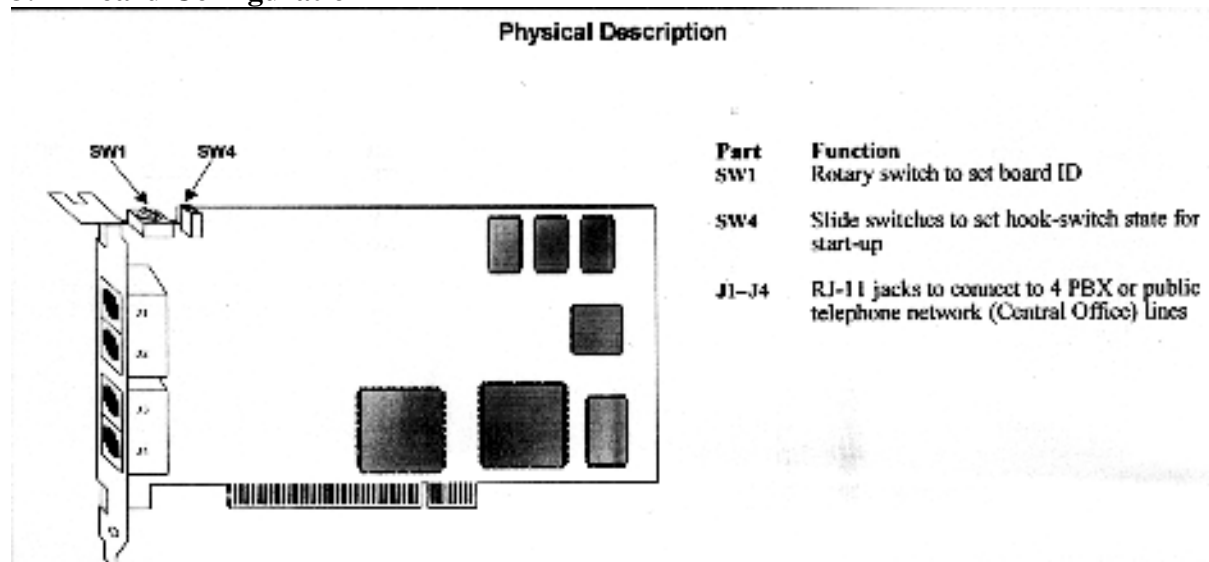


Figure 3.2.34

Note: If you are using a D/4 board refer to the install card that came with the board for jumper locations.

The following diagram will explain the board configuration of the Dialogic D/4. See Figure 3.2.34.

3.3 – Set the Hardware Switches

These Dialogic boards use Plug and Play technology, including hardware auto-configuration for IRQ and memory address. These boards allow you to use the factory default hardware settings for quick installation and operation.

A. Set the Board Sequence (Only applies when using two boards or more)

Board Numbering: When you start Dialogic boards, each board is assigned a sequential number for identification and use by the application program. The board number is based on the board ID that is set through a hardware switch on the board (rotary switch SW1).

Set the board ID switch to select the board sequencing method as follows:

- **Geographical Sequence (by OCI Bus and Slot Number): Board ID 0 (factory default)**
All Dialogic PCI boards can share the factory default setting of board ID 0. Board numbers will be assigned in ascending order based on the PCI bus and slot number. Note: If you add a board to the system, it could change the Dialogic board numbering, depending upon the PCI bus and slot number where you install.
It. Also, PCI boards that use ID 0 for the geographical numbering sequence will be numbered before boards that use boards Ids 1-F. The geographical method is not available for ISA bus boards.
- **Programming Sequence (by Dialogic Board ID): Boards IDs 1-F**
If you change the board ID from the factory default of 0 to any other number, the board numbering will be in ascending order based on the board ID. **Important!** The board ID must be unique (it must not conflict with the board ID of any other Dialogic ISA or PCI board). If you use this method, Dialogic recommends that you assign sequential numbers starting at 1. This method is also used for all ISA bus boards.

Precedence in Mixed Systems: In systems using both methods, boards that use geographical sequence will be numbered before boards that use programmable sequence.

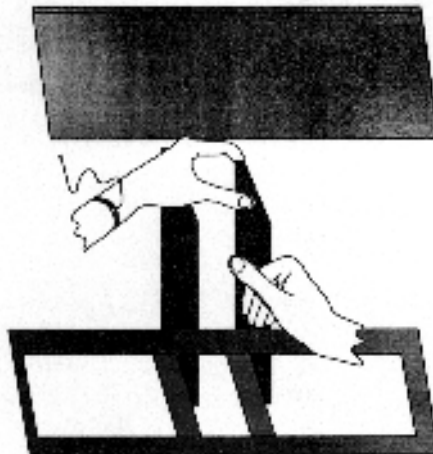
3.4 - Install the Boards in the PC

Warning! To reduce the risk of electric shock:

- Switch off the power and remove power cords before opening the computer case.
- Do not re-attach power cords or switch on power to the computer while the computer case is removed
- Refer to the Regulatory Notices section of this Quick Install Card for important installation information.

Install each board in the PC chassis using adjacent PCI slots according to the following instructions.

1. Turn off all power to the system, and disconnect the system's power cords from electrical outlets.
2. Remove the PC cover.
3. Select an empty PCI expansion bus slot, and remove the slot's retaining screw and access cover plate.
4. Insert the board's edge connector into the bus slot. Apply pressure only to the top edge of the board, and gently rock the board forward and backward to seat the edge connector into the slot.

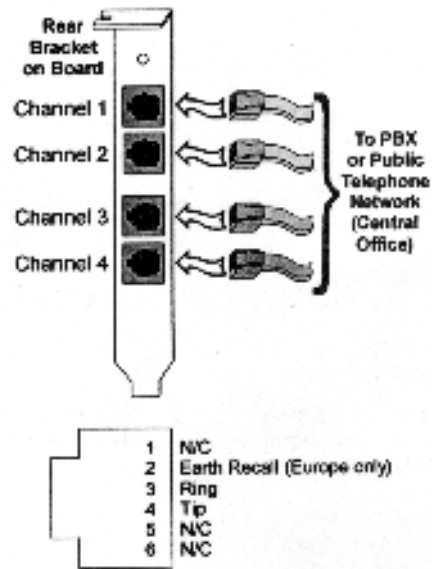


5. Install the retaining screw.
6. Select a new slot and repeat steps 3 through 5 for each board you are installing. Replace the PC cover when finished.

3.5 - Connect External Cables

Each RJ-11 jack on the rear bracket of the voice board supports a sign voice channel. Use RJ-11 connectors and phone cable to connect each voice channel jack to a PBX or the Public Telephone Network Central Office (Co).

Note: A standard telephone will not function when directly attached to the board.



3.5 - Starting Your Computer

After completing the installation of the Dialogic board, make sure all connections, mounting screws, etc., are secure. After replacing the side panels or cover on your computer, you should start the computer.

3.6 - Dialogic Quick Test

Run this test to verify correct installation of your board(s).

3.7 - Opening the Dialogic Configuration Manager

Click on Start/Programs/Dialogic System Software/Configuration Manager- DCM.

3.8 - Dialogic Board Start Button

Press the "Start" button to start the Dialogic board. NOTE: You will need to start the boards each time your computer is restarted.

3.9 - Voice Board Started

After the process is complete, the window will indicate the number of boards started.

3.10 - Pressing the Close Button

Press the "Close" button.

4.0 - Opening the Dialogic Voice Sample Program

Testing with the “Voice Sample” program verifies your board is working. If you cannot complete this test verify your IRQ and Memory settings in the Windows control panels. Also verify your jumpers and switches.

Go to, Windows start button/Programs/Dialogic System Software/Dialogic Sample Programs/Multi-threaded voice.

4.1 - Selecting dxxxB1C1

From the “File” pull down menu select “Open”. With “dxxxB1C1” highlighted in blue click the “OK” button. This is opening channel 1 on your board.

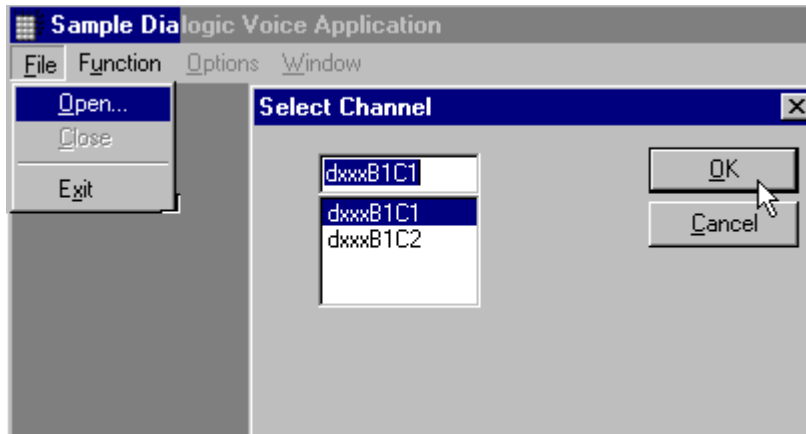
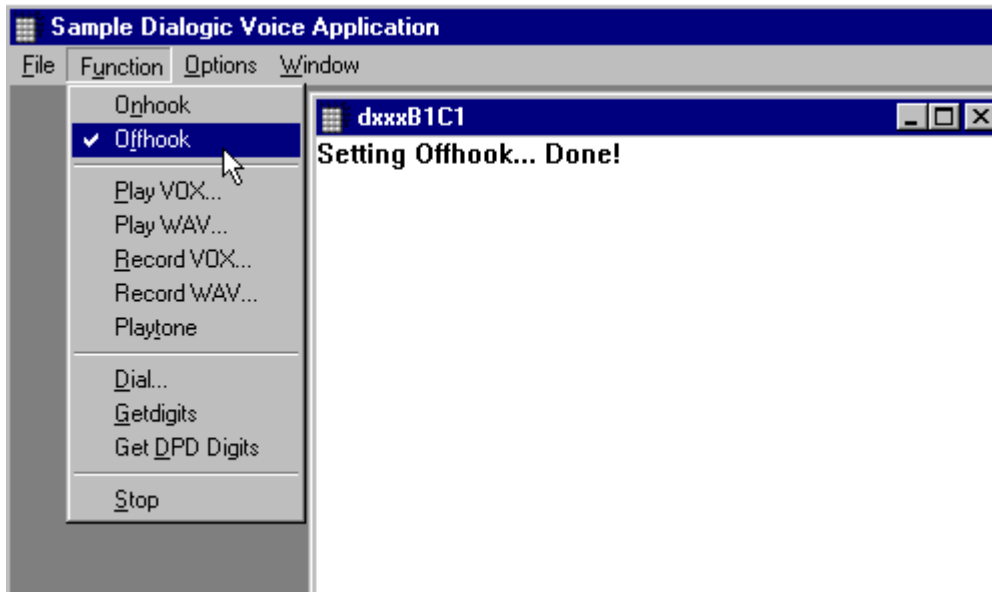
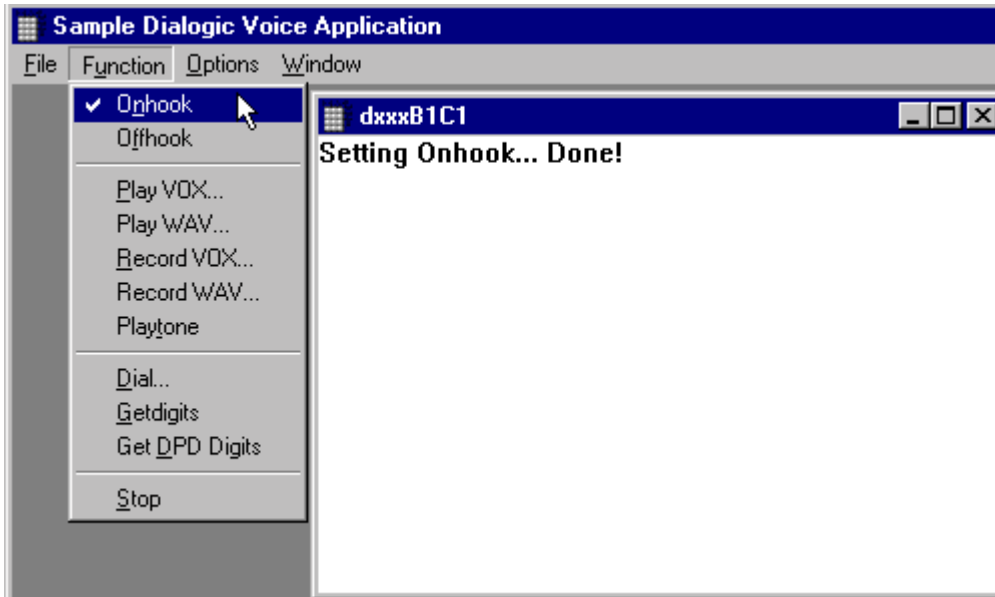


Figure 3.3.7

4.3 - Function Option - Offhook

From the “Function” pull down menu select “Offhook”. You should see “Setting Offhook...Done!” See Figure 3.3.9. 4.4 - Function Option - Onhook



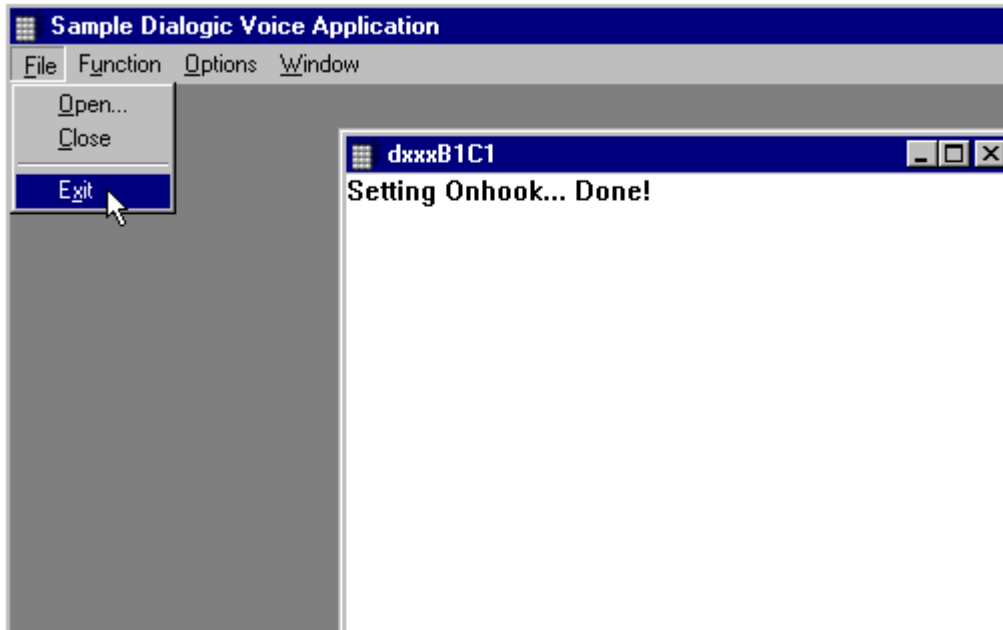


From the "Function" pull down menu select "Onhook". You should see "Setting Onhook...Done!"

(See below photo)

4.5 - Exiting the Sample Dialogic Voice Application

Select "Exit" from the "File" pull down menu. **Note: If you have installed multiple boards' return to step 3.3.7 and select the 1st channel on the 2nd board and test that board (B2C1), do this for each board you have installed.**



4.6 Install the Drivers

1. On your desktop click My Computer, then Local Disk (C:), then Program Files, then Dialogic, then DRVS, Select the driver named *dlgcsram_nt4*.

In the Dialogic Configuration Manager select board type: D/x1D-PCI then select D/4PCI.

Give the board a unique name.

5.0 - Install CoolEdit Software

1. This is a shareware program we provide in case you do not have a wave editor program. You can use any wave editor you choose.
2. Run the c96setup.exe file found on the Winlead Dialer Software CD-ROM.
3. Say “yes” to use this as your default editor when asked.
4. Say “No” when asked to enable peak file feature.
5. Accept the defaults for all other dialog boxes.

6.0 - Install Winlead Dialer Software

1. Run the Winlead Dialer Software 8.Xexe program found on your Winlead Dialer Software CD-ROM.
2. Allow it to install into the default C:/Winlead Dialer Software directory.
3. Say “Yes” to let it backup files.
4. Restart your computer after the install program has run.

7.0 - Configure Winlead Dialer Software Preferences

Preferences are specific to a Winlead Dialer Software Instance. If a registration window appears, jump to the “Enable Winlead Dialer Software” Section of this guide and then return here.

1. Open Winlead Dialer Software Instance 1 by double clicking on the “Instance 1” icon on your desktop.
2. Select “Preferences” from the “options” pull down menu.
3. Click on the “Voice” tab.
4. These settings define the way Winlead Dialer Software will dial calls and what types of calls it is allowed to make.
5. Enter your local area code in the “local area code(s) 7” field.
6. Set the remaining fields, as you want them. Refer to the Section 3 for more details.
7. Click the “Apply” button.
8. Click on the “Setup” tab.
9. Select “Operational” in the mode selection field.
10. Click on the “Apply” button.
11. Click on the “Failsafe” tab.
12. Set the “Start” and “Stop” time for each day of the week. Winlead Dialer Software will not dial outbound calls before or after these times.
13. Click on the “OK” button.
14. Press the “Stop” program button on the Instance 1 window.
15. Open Winlead Dialer Software Instance 2 by double clicking on the “Instance 2” icon on your desktop.
16. Configure the instance 2 preferences.
17. Press the “Stop” program button on the Instance 2 window.

8.0 - Enable Winlead Dialer Software

1. Double click on the “Winlead Dialer Software Instance 1” icon on your desktop.
2. If the Winlead Dialer Software Registration window appears, write down the Machine ID number it gives you.
3. Enter the Winlead Dialer Software Key Code you were sent.
4. If you were not sent a Key Code, call your Winlead Dialer Software dealer or 1-803-233-0300 and have your Machine ID ready. They will give you a Key Code.
5. Press the “Stop” program button on the Instance 1 window.
6. Restart Instance 1. It will now be functional.

Winlead Dialer Software Information, Write your Machine ID and Key Code below for future reference:

Machine ID=

Key Code=

